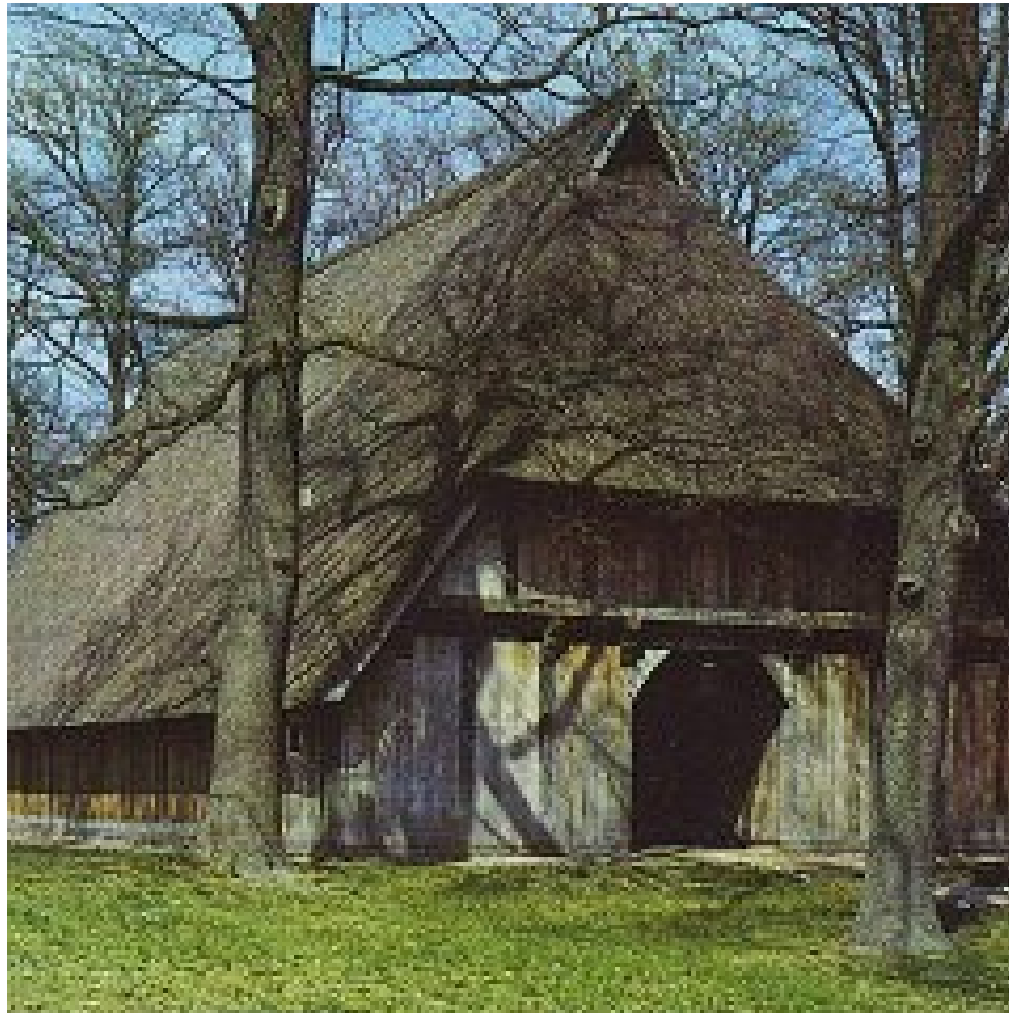
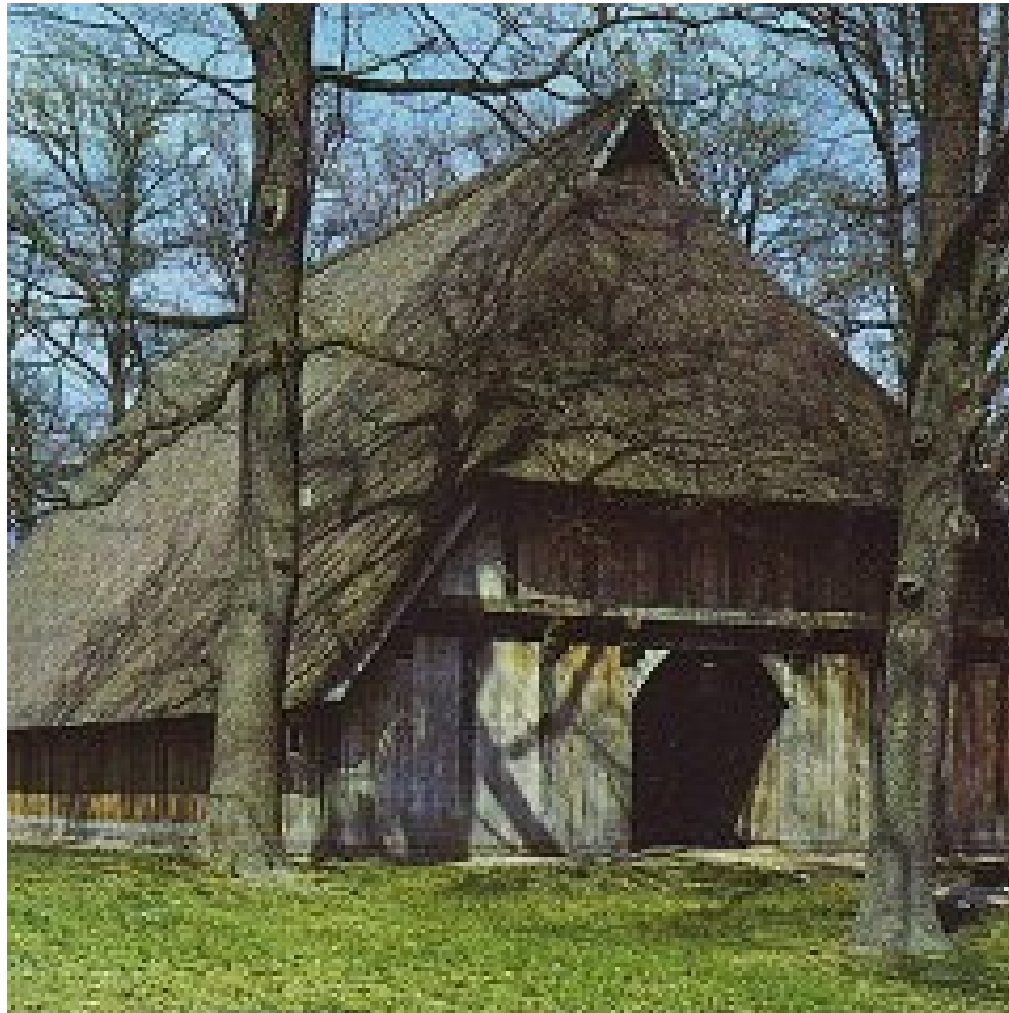


35 Years of Wilsede: Past, Present, and Future



35 Years of Wilsede **Magic**: Past, Present, and Future



In that June night in 1973, as the coaches started from Niederhavebech to Wilsede, Seymour Perry spotted the Sputnik circling the atmosphere and the Wilsede Meetings “Modern Trends in Human Leukemia” started.



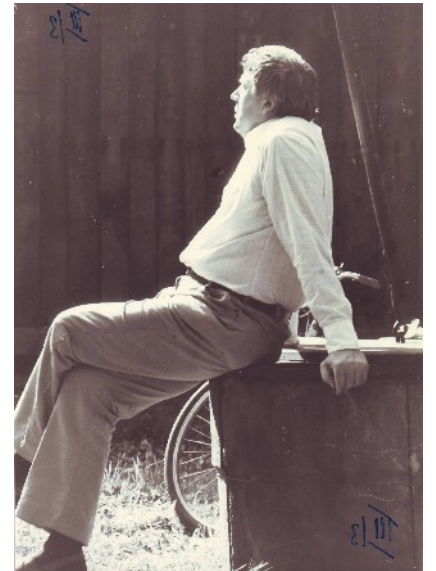
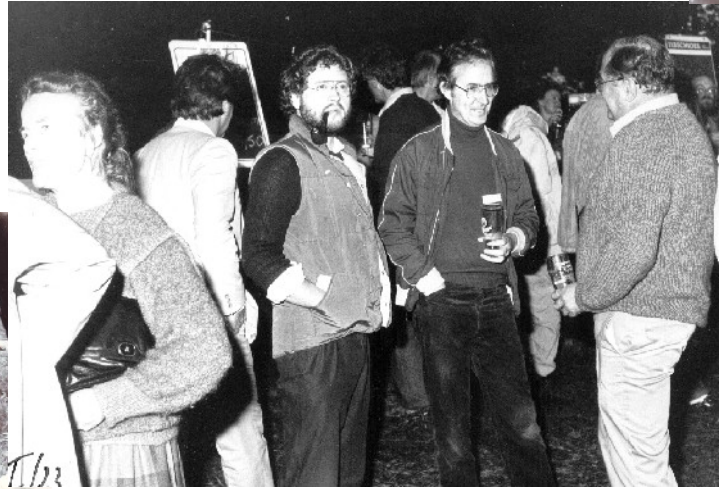


the idea

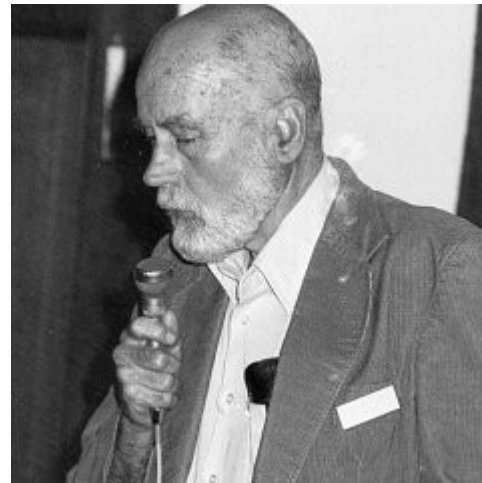


June 1972, Harbour of Hamburg.
Rolf Neth & Robert C. Gallo

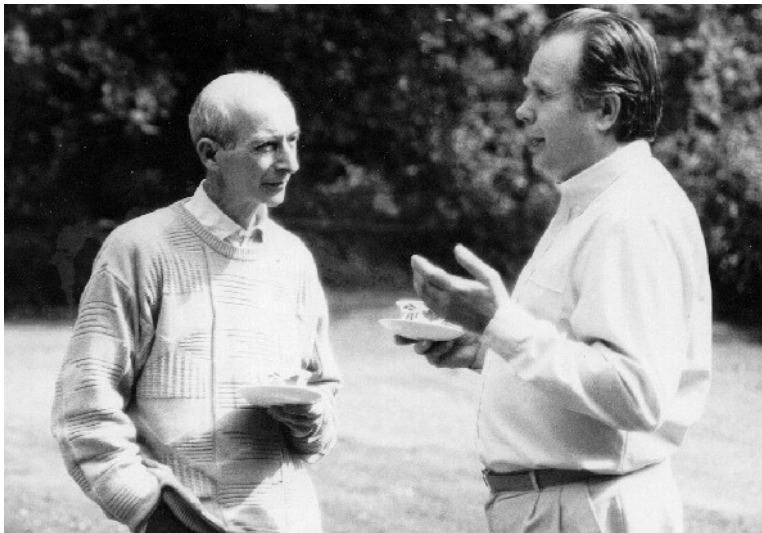




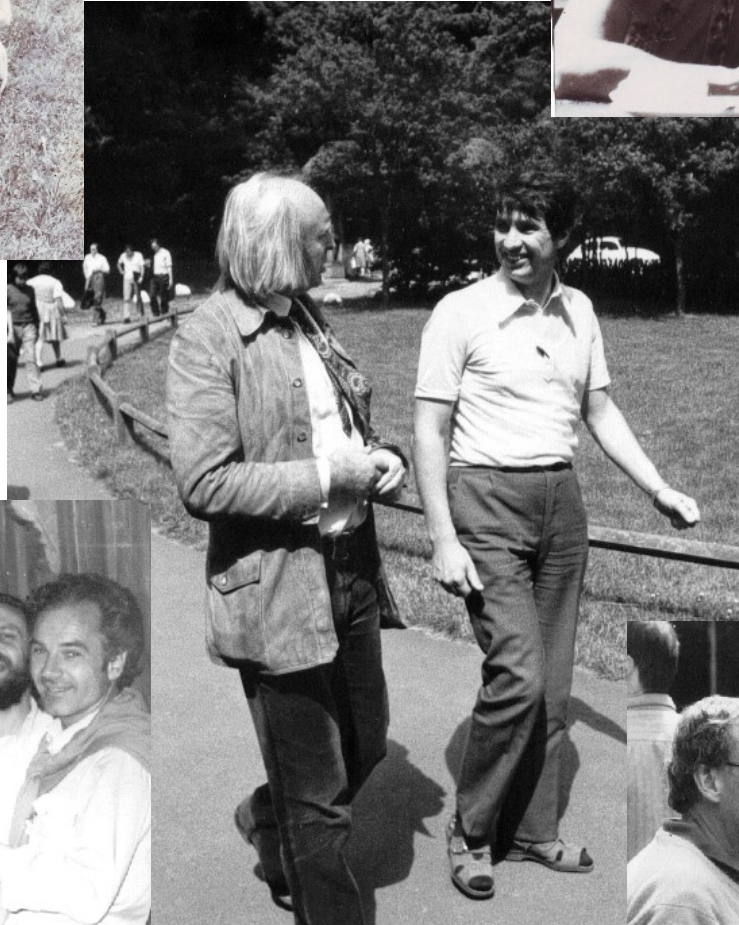
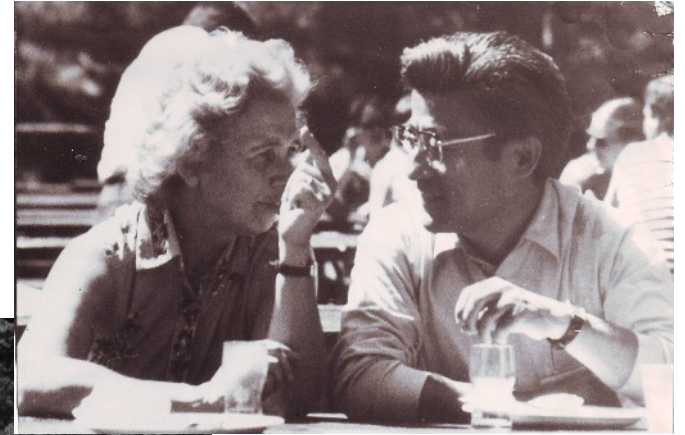
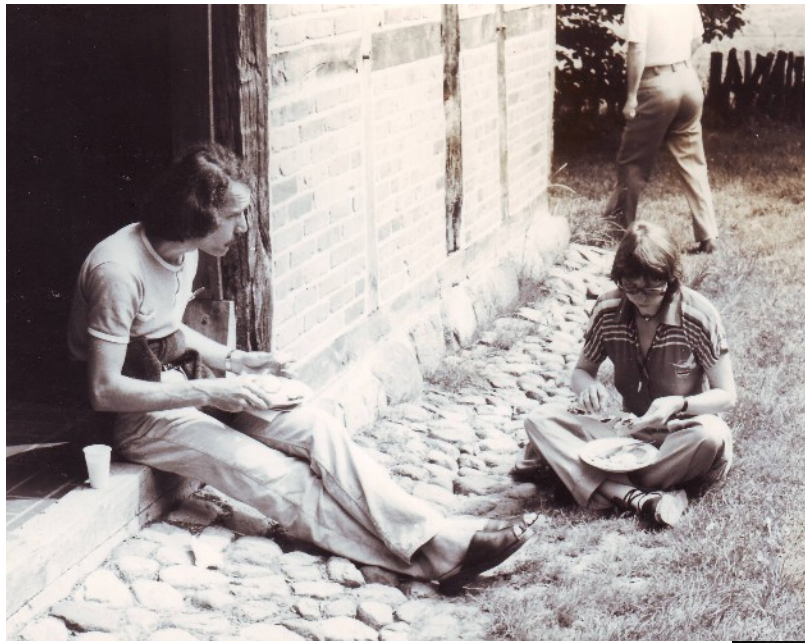












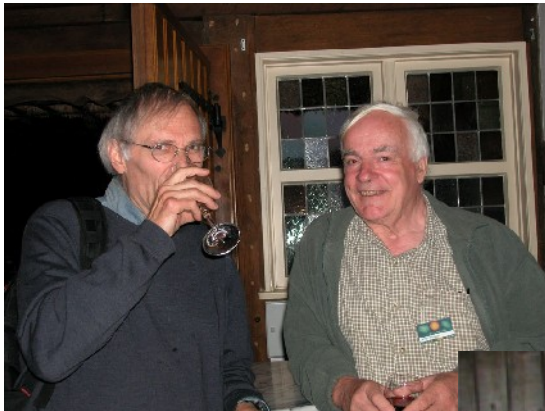




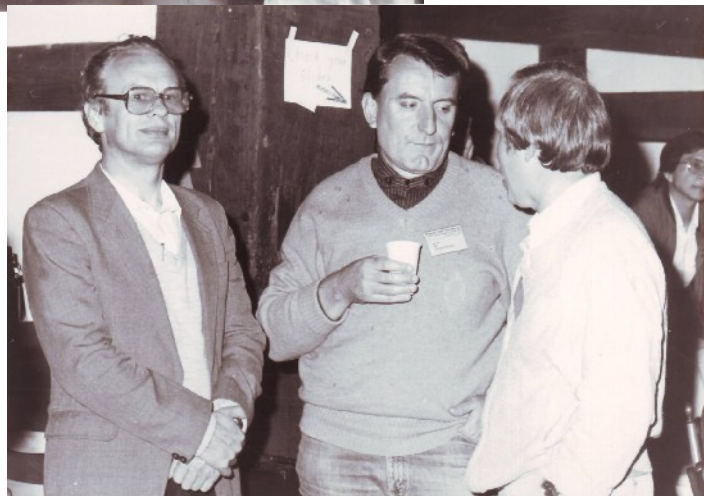






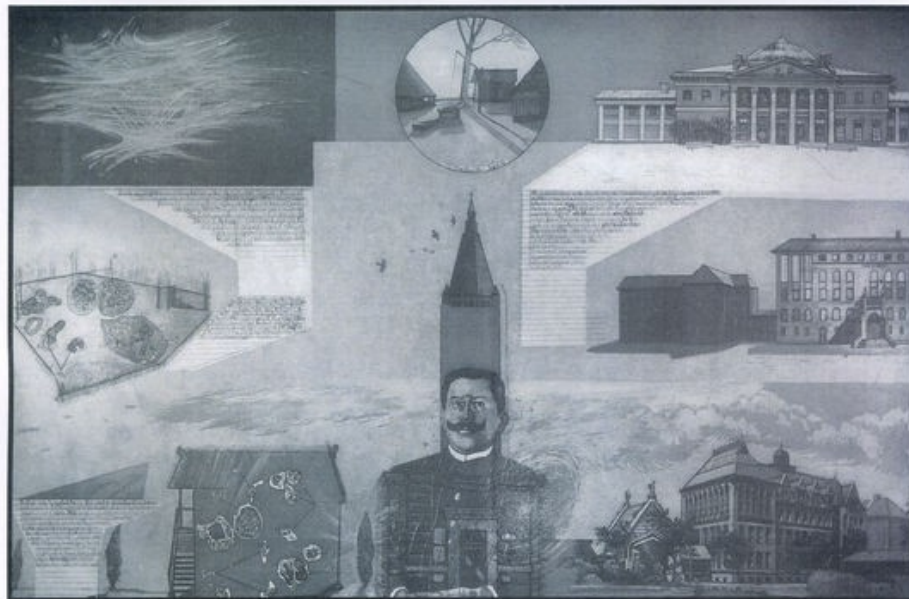


[illegible]











MODERN TRENDS IN HUMAN LEUKEMIA IX



"Maximov's World", nach einer Radierung 60x60 cm! von Michel Weidemann

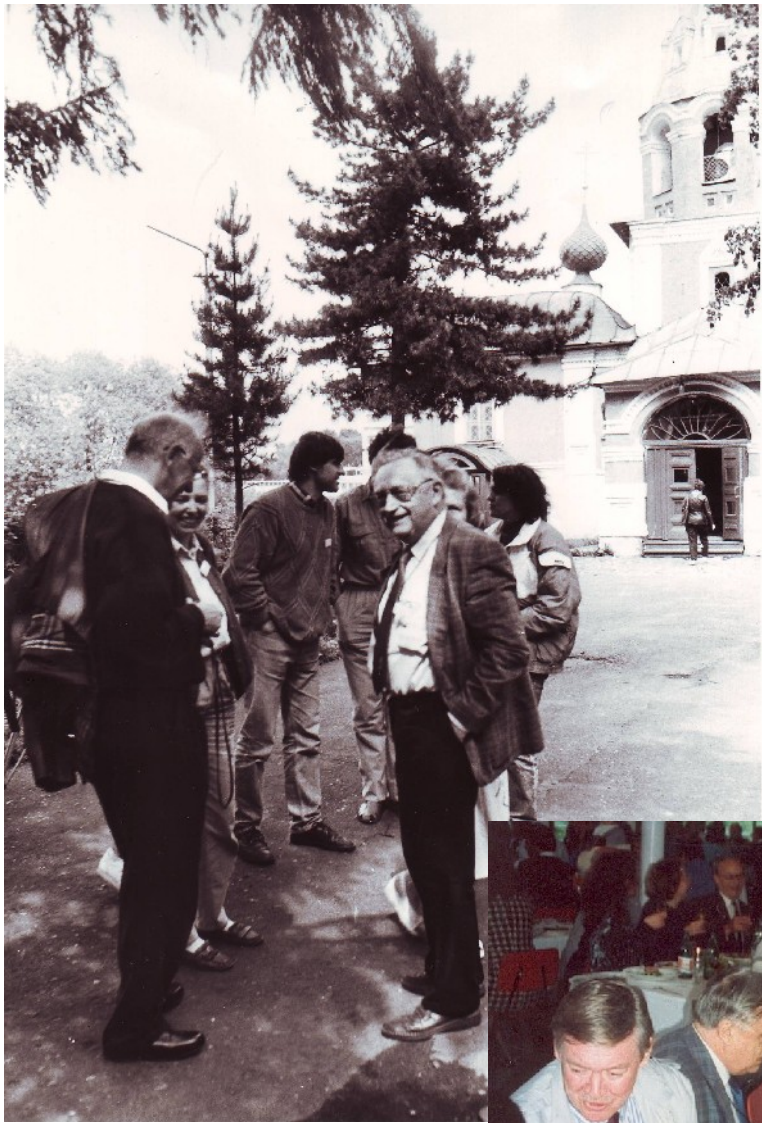
Michel Weidemann, Tel. 04107-24071

HAMBURG	MOSCOW	VOLGA	LENINGRAD	WILSEDE
<p>Wilsede Joint Meeting "Signal Transfer Pathway" 16.6.1990, 9.00 - 18.00 h Congress Centrum Hamburg</p>  <p>MILDRED SCHEEL Memorial Lecture</p> <p>Introduction: K. Munk, FRG Speaker: A. Ullrich, FRG</p> <p>Scientific Organisation: W. Ostertag, FRG</p> <p>Speakers: P. Blackshear, USA S. Goo Rhee, USA I. Kerr, GB A. Miyajima, USA P. Tambourin, F P. G. Roeder, USA U. Rapp, USA</p> <p>No special registration required</p>	<p>Moscow Joint Meeting "Cell Biological Aspects" 13.6.1990, 9.00 - 18.00 h Shemyakin Institute of Bioorganic Chemistry</p>  <p>YURI A. OVCHINNIKOV Memorial Lecture</p> <p>Speaker: Janet Rowley, USA R. C. Gallo, USA</p> <p>Organisation Committee: Elena Frolova, USSR V. Ivanov, USSR R. Petrov, USSR</p> <p>GETTING TO KNOW MOSCOW</p>	<p>Volga-Wilsede Meeting "Molecular Factors of Hematopoiesis" 14.6.1990 - 15.6.1990</p>  <p>Special Lecture</p> <p>Speaker: S. Ohno, USA</p> <p>Organisation Committee: Elena Frolova, USSR V. Ivanov, USSR R. Petrov, USSR</p> <p>SPECIAL EVENING IN UGLICH, VOLGA</p>	<p>Leningrad Joint Meeting "Clinical Aspects" 14.6.1990 - 17.6.1990 Hotel Leningrad</p>  <p>ALEXANDER MAXIMOV Lecture</p> <p>Speaker: M. Dexter, UK</p> <p>Round Table Discussion "Maximov's Ideas on Modern Trends in Human Leukemia" Chairmen: A. Friedenstein, USSR R. C. Gallo, USA</p> <p>Organisation Committee: B. Alantsev, USSR V. Ivanov, USSR N. Nagaike, WHO R. Petrov, USSR A. Vorobiev, USSR R. Wagner, USSR</p> <p>WHITE NIGHTS</p>	<p>Wilsede Meeting "Modern Trends in Human Leukemia" 17.6.1990 - 21.6.1990 "De Emboell" Wilsede</p>  <p>FREDERICK STOHLMAN, JR. Memorial Lecture</p> <p>Speakers: S. Broder, USA F. Grosveld, UK</p> <p>EGON T. DEGENS SESSION "Early Life and Evolution"</p>  <p>PASTOR T. BODE Lecture:</p> <p>Speaker: A. Mitchison, UK</p> <p>MIDNIGHT FIRE</p>

Satz, Litho, Druck, Druck und Kopie: Hamburg - Graphic Design Studio Stern, Hamburg

For all questions:
Prof. Rolf Neith - Universitäts-Krankenhaus Eppendorf
Medizinische Klinik, Aht. I. Klinische Chemie
Martinistr. 52 - 2000 Hamburg 20 - West-Germany

Informations for USSR:
Dr. Elena I. Frolova - Shemyakin Institute of
Bioorganic Chemistry
Miklukho-Maklaya 16/10 - 117871 Moscow GSP-7 V-437 - USSR



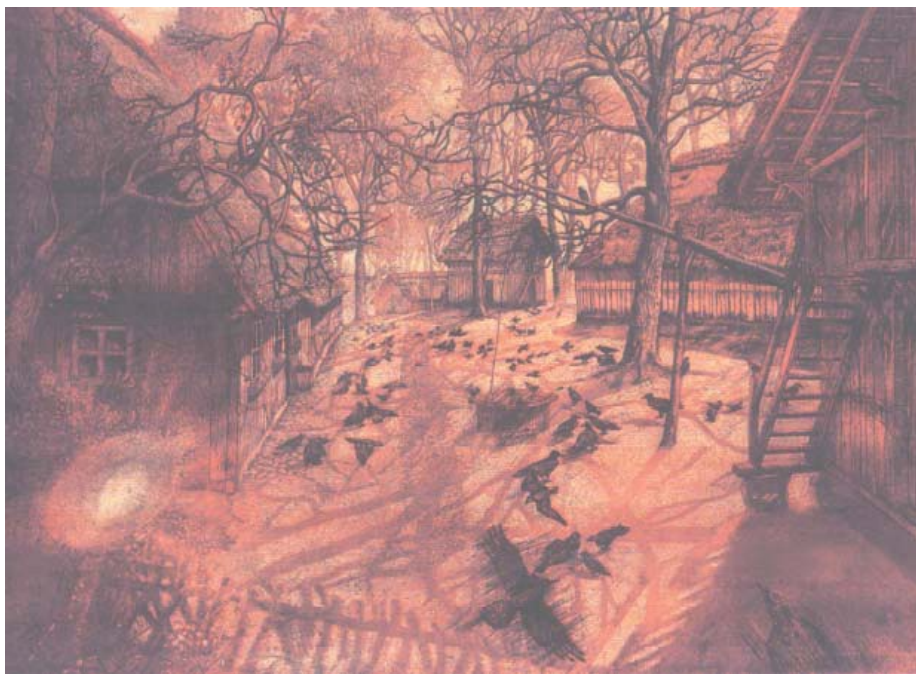












A Maze in Science



